

Embryonic Dorsal-Ventral Signaling: Secreted Frizzled-Related Proteins as Inhibitors of Tolloid Proteinases

Hoon X. Lee,^{1,2} Andrea L. Ambrosio,^{1,2} Bruno Reversade,¹ and E.M. De Robertis^{1,*}

¹Howard Hughes Medical Institute and Department of Biological Chemistry, University of California, Los Angeles, CA 90095, USA

²These authors contributed equally to this work.

*Contact: ederobertis@mednet.ucla.edu

DOI 10.1016/j.cell.2005.12.018

SUMMARY

Here we report an unexpected role for the secreted Frizzled-related protein (sFRP) Sizzled/Ogon as an inhibitor of the extracellular proteolytic reaction that controls BMP signaling during *Xenopus* gastrulation. Microinjection experiments suggest that the Frizzled domain of Sizzled regulates the activity of Xolloid-related (Xlr), a metalloproteinase that degrades Chordin, through the following molecular pathway: $Szl \vdash Xlr \vdash Chd \vdash BMP \rightarrow P-Smad1 \rightarrow Szl$. In biochemical assays, the Xlr proteinase has similar affinities for its endogenous substrate Chordin and for its competitive inhibitor Sizzled, which is resistant to enzyme digestion. Extracellular levels of Sizzled and Chordin in the gastrula embryo and enzyme reaction constants were all in the 10^{-8} M range, consistent with a physiological role in the regulation of dorsal-ventral patterning. Sizzled is also a natural inhibitor of BMP1, a Tolloid metalloproteinase of medical interest. Furthermore, mouse sFRP2 inhibited Xlr, suggesting a wider role for this molecular mechanism.

INTRODUCTION

Cell differentiation in vertebrate embryos occurs in a stereotypical manner. For example, the mesoderm differentiates from dorsal to ventral into notochord, somite, kidney, lateral plate, and blood tissues. The Spemann organizer, a group of cells on the dorsal side of the gastrula embryo, has proven a fertile ground for discovering novel molecules mediating these dorsal-ventral (DV) cell differentiations (reviewed in

De Robertis and Kuroda, 2004). This dorsal center expresses many secreted antagonists of Bone Morphogenetic Protein (BMP)—Chordin (Chd), Noggin and Follistatin—as well as Wnt antagonists of the secreted Frizzled-related protein (sFRP) family (Rattner et al., 1997; Pera and De Robertis, 2000), such as Frzb-1, Crescent, and sFRP-2. On the opposite side of the embryo, a ventral center marked by the sFRP Sizzled (Szl) is formed (Salic et al., 1997; De Robertis and Kuroda, 2004). DV patterning is thought to result from a conversation between the dorsal and ventral centers mediated by diffusible proteins regulating BMP signaling levels (Reversade and De Robertis, 2005). A gradient of BMP activity is set by the dorsal BMP antagonist Chordin, which is in turn inactivated by cleavage at specific sites by Xolloid-related (Xlr), a ventrally produced zinc metalloproteinase (Piccolo et al., 1997; Dale et al., 2002). This biochemical pathway is an ancient one since *Drosophila* DV patterning is also mediated by interactions between Dpp/BMP, Sog/Chordin, and Tolloid/Xolloid (De Robertis and Kuroda, 2004).

Extensive genetic screens in zebrafish have identified seven zygotic mutations affecting DV patterning (Hammerschmidt and Mullins, 2002; Schier and Talbot, 2005). Mutants with exaggerated dorsal structures, such as notochord and neural tissue, were defective in components required for BMP signaling, such as BMP2b, BMP7, the BMP receptor Alk8, Smad5, and Tolloid. Only two ventralizing mutations were found: *chordino* and *ogon/mercedes*. The *chordino* phenotype was caused by mutations in Chordin (Schulte-Merker et al., 1997) and *ogon/mercedes* by mutations in the zebrafish homolog of *Xenopus* Sizzled (Yabe et al., 2003; Martyn and Schulte-Merker, 2003). Mutant *ogon* embryos had ventralized loss-of-function phenotypes similar to those of the BMP antagonist *chordino*. In addition, zebrafish studies had shown that the *ogon* phenotype, like *chordino*, could be rescued by inhibition of BMP signaling (Hammerschmidt et al., 1996; Miller-Bertoglio et al., 1999; Wagner and Mullins, 2002). Therefore, the identification of *ogon* as Sizzled, an sFRP presumed to have Wnt antagonist activities, rather than the BMP inhibitor that was expected, came as a big surprise.

Although Sizzled was initially described as an Xwnt8 antagonist (Salic et al., 1997), subsequent studies suggested that this was not the case (Bradley et al., 2000; Collavin

and Kirschner, 2003; Yabe et al., 2003). In *Xenopus*, loss of function using a Szl antisense morpholino oligo (MO) showed that Sizzled functions as a feedback inhibitor of ventral-most mesoderm, causing an expansion of ventral blood islands (Collavin and Kirschner, 2003). In zebrafish, *Szl/ogon* transcript levels were greatly increased by point mutations in *Szl/ogon* itself (Martyn and Schulte-Merker, 2003; Yabe et al., 2003). Microinjection of zebrafish *Szl/ogon* mRNA caused strong dorsalization of the embryo. This anti-BMP effect appeared to be mediated by a transcriptional increase in *chordin* and a decrease in *BMP2b* expression (Martyn and Schulte-Merker, 2003), and the effects of injected *Szl/ogon* mRNA were lost in *chordin*^{-/-} mutants (Yabe et al., 2003). These zebrafish studies concluded that the sFRP molecule Sizzled/ogon functions through an unknown molecular mechanism in a negative feedback loop involving either BMP signaling or an as yet to be identified ventralizing Wnt (Martyn and Schulte-Merker, 2003; Yabe et al., 2003).

In the present paper, we show that the Sizzled/ogon sFRP protein regulates DV patterning in *Xenopus* through a novel molecular mechanism: it is a competitive inhibitor of the proteolytic activity of the Xolloid-related enzyme. The protease inhibitory activity maps to the frizzled (Fz) cysteine-rich domain (CRD) of Sizzled. Previously, Fz domains were known to function only as Wnt binding modules (Bhanot et al., 1996; Leyns et al., 1997; Rattner et al., 1997; Povelones and Nusse, 2005). There are three Tolloid-like genes in *Xenopus*: Xolloid-related (designated Tolloid-like 1 in mouse and Tolloid in zebrafish), Xolloid (designated Tolloid-like 2 in mouse), and BMP-1 or Procollagen C-Peptidase (PCP). The three enzymes can cleave Chordin, yet Xlr is the most effective. BMP1/PCP and Xolloid are expressed uniformly in the early embryo, whereas Xlr is produced in the ventral region (Goodman et al., 1998; Dale et al., 2002). In addition to Chordin, BMP1/PCP has other extracellular substrates, such as the Procollagen carboxy-terminal peptide that must be removed before collagen fibers can form (Kessler et al., 1996; Greenspan, 2005). We found that Sizzled is a very effective inhibitor of BMP1/PCP. We also report that a sFRP from mouse, sFRP2, functions as zinc metalloproteinase inhibitor. Thus, we may have uncovered a more general property of Fz domains. In sum, this work reveals an unexpected role for sFRPs in the regulation of extracellular proteases of the Tolloid family.

RESULTS

Sizzled Regulates Spemann Organizer Signals

In the course of studies on the loss-of-function phenotype of Chordin in *Xenopus* (Oelgeschläger et al., 2003), we noted that microinjection of antisense Chd MO caused a marked increase in *Szl* transcripts in early tadpoles (Figures 1A and 1B). To our surprise, this phenotype was very similar to the one caused by Szl MO (Collavin and Kirschner, 2003), as shown in Figures 1B and 1C. This remarkable increase of *Szl* transcripts accrued mainly in ventral and posterior ectoderm (Figure S1). Intrigued by how two secreted molecules

that at gastrula are expressed at a considerable distance from each other (Figure 1D) produced identical loss-of-function phenotypes, we undertook an investigation of how this works at a molecular level. In *Xenopus*, a number of secreted proteins are transcribed on the ventral or dorsal centers (Figure 1E). Sizzled and Chordin presumably function as components of a wider network of secreted proteins that together constitute the molecular machinery of DV patterning.

The activities of Sizzled and of the Spemann organizer are intertwined. In overexpression experiments, *Szl* mRNA had dorsalizing effects that can be visualized by an expansion of the pan-neural marker *Sox2* (Figures 1F and 1G). In bisection experiments (Reversade and De Robertis, 2005), this neural-promoting (anti-BMP) activity of *Szl* mRNA was observed in dorsal half-embryos but was without any effect in the ventral half (Figure 1G). This indicated that Sizzled does not affect ventral tissues directly and that it requires a functional Spemann organizer in order to be active. Reciprocally, the inductive activity of the Spemann organizer required Sizzled in the responding tissue. When wild-type organizers were transplanted to the ventral side of embryos depleted of Sizzled, the secondary axes developed with reduced amounts of somites and neural tissue, in particular brain and eyes (Figures 1H and 1I and data not shown). Siamese twins induced by organizer grafts almost invariably formed Y-shaped embryos with two rostral ends and a single tail lacking a ventral fin (Figure 1H). In *Szl*-depleted hosts, the amount of induced central nervous system (CNS) was reduced and the twins adopted an H shape with two well-separated tailbuds, each one with its own ventral fin (Figure 1I). The development of the ventral fin requires high BMP signaling levels in zebrafish and *Xenopus* (Hammerschmidt and Mullins, 2002; Reversade et al., 2005). These embryological results suggested that the Spemann organizer requires Sizzled to exert its full activity.

Sizzled Regulates Chordin Degradation

Is Sizzled a BMP or a Wnt inhibitor? Western blots of total extracts of microinjected embryos showed that the levels of phospho-Smad1 were markedly increased at the early gastrula stage by *Szl* knockdown (Figure 2A, compare lanes 1 and 4), reflecting an increase in BMP signaling (Persson et al., 1998). The ventral accumulation of *Szl* transcripts caused by *Szl* MO is mediated by BMP4 signals (Figures 2B and 2C). At gastrula stage, the ventral center was greatly expanded by *Szl* knockdown, and DV pattern markers (*BMP4*, *Myf-5*, *Vent-2*) indicated increased BMP signals comparable to those caused by knockdown of the BMP antagonist Chordin (Figure S2). On the other hand, Wnt signaling, measured by the levels of β -catenin protein, did not appear to be significantly affected by *Szl* knockdown or overexpression (Figure 2A, lanes 4 and 5). Consistent with this, the ventral Sizzled feedback loop was not inhibited by overexpression of the Wnt antagonist Dickkopf-1 or by *Xwnt8* MO, as would be expected if *Szl* functioned principally as an anti-Wnt (Figure S3). These results showed that endogenous Sizzled functions as a BMP antagonist in *Xenopus* embryos and failed to reveal any effect on canonical Wnt signaling.

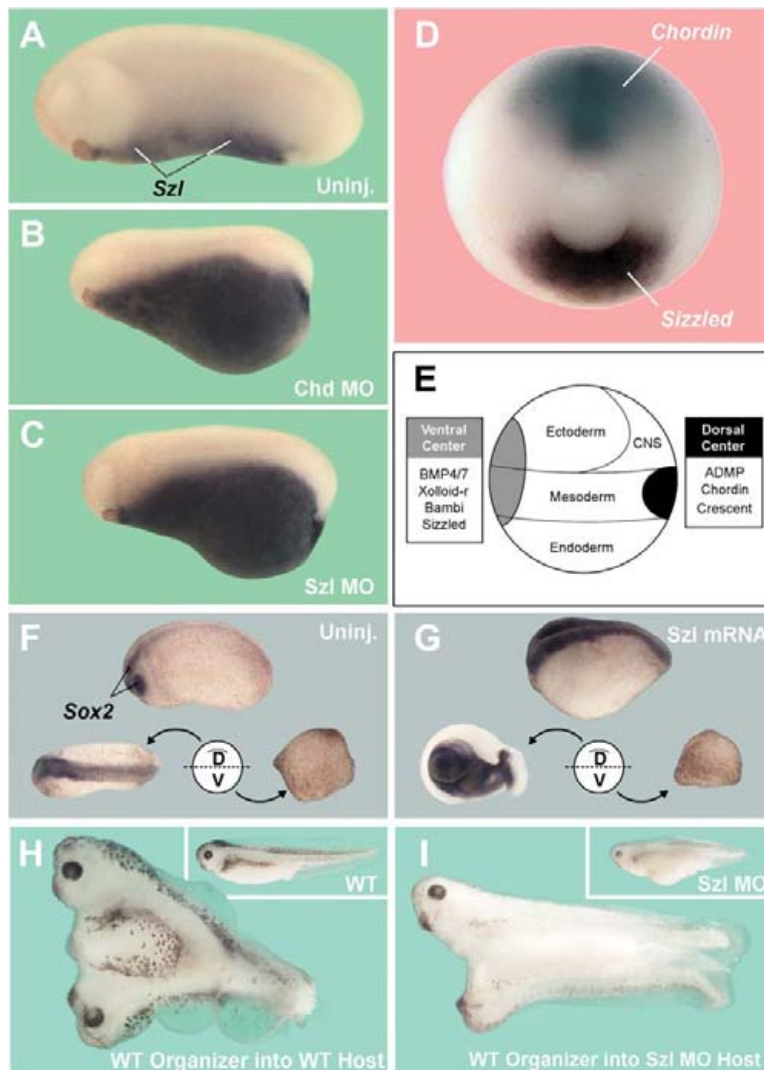


Figure 1. Sizzled Is Expressed Ventrally Yet Requires a Dorsal Component to Function

(A–C) *Szl*-depleted embryo is ventralized, as marked by the accumulation of *Szl* ventro-posterior transcripts and phenocopies knockdown of *Chd*.

(D) *Chd* and *Szl* are expressed at opposite poles of the *Xenopus* gastrula.

(E) DV patterning is regulated via proteins secreted by the dorsal and ventral signaling centers. (F) Embryo bisected at blastula across the DV axis can self-regulate to form a well-proportioned dorsal-half embryo, while the ventral half forms a belly-piece. *Sox2* marks the CNS tissue. Uninjected wild-type embryo shown on top.

(G) Injection of *Szl* mRNA increases *Sox2* staining in intact (top) and dorsal-half embryos but is without phenotypic effect in the ventral-half embryo ($n = 40$).

(H) A Spemann organizer transplant on the ventral side of a wild-type embryo forms a Y-shaped Siamese embryo with two heads and a single tailbud ($n = 10$).

(I) Wild-type Spemann organizer grafted into a *Szl*-depleted host forms an H-shaped embryo with CNS induction and two distinct tailbuds ($n = 11$).

To investigate why BMP signaling is increased in *Szl* knockdowns, we examined the effects of *Szl* MO on Chordin levels. Uninjected, *Szl* MO-, or control BMP2/4/7 MO-injected embryos were dissociated and allowed to secrete Chordin into the medium between gastrula stages 10 and 12 (Figure 2D). We found that endogenous Chordin protein levels were decreased in the supernatant of *Szl*-depleted embryos, while the cell pellets showed abundant *chordin* mRNA transcripts. This suggested that the stability of Chordin protein might be affected, prompting us to study the effect of Sizzled on the *Xlr* chordinase.

In vivo, Chordin is under the proteolytic control of *Xlr* (Figure 2, panel I), which can release BMPs from a ternary complex of *Chd*/Tsg/BMP, allowing renewed signaling through cell-surface receptors (Piccolo et al., 1997; Dale et al., 2002; Reversade and De Robertis, 2005). Overexpression of *Xlr* mRNA phenocopied the loss of Chordin (upregulation of ventral *Szl* expression), indicating high BMP activity (Figures 2E and 2F). The effects of Sizzled protein were tested

using a protein fused to the immunoglobulin constant region (*Szl*-Fc), which can be purified on protein A columns to yield samples sufficiently concentrated (2.5×10^{-5} M) for biological and biochemical studies. *Xenopus* *Szl*-Fc protein dorsalized the embryo and synergized with Chordin when injected into the blastula cavity (Figure 2H, inset and Figure S4). Importantly, the pro-BMP effects of *Xlr* mRNA were eliminated by *Szl*-Fc protein microinjection (compare Figures 2E and 2G). The same amount of *Szl*-Fc was without phenotypic effect in Chordin-depleted embryos (Figures 2F and 2H), confirming the observations of Yabe et al. (2003).

We then used a dominant-negative form of *Xlr* (DN-*Xlr*) to determine whether *Xlr* function was required for the feedback regulation of Sizzled expression. DN-*Xlr* mRNA dorsalizes wild-type embryos (Figure 2J; Dale et al., 2002). Remarkably, microinjection of DN-*Xlr* mRNA was able to block the ventral upregulation of *Szl* transcripts in *Szl* MO embryos (Figure 2K; compare with sibling *Szl* MO embryo shown in the inset). Taken together, these in vivo

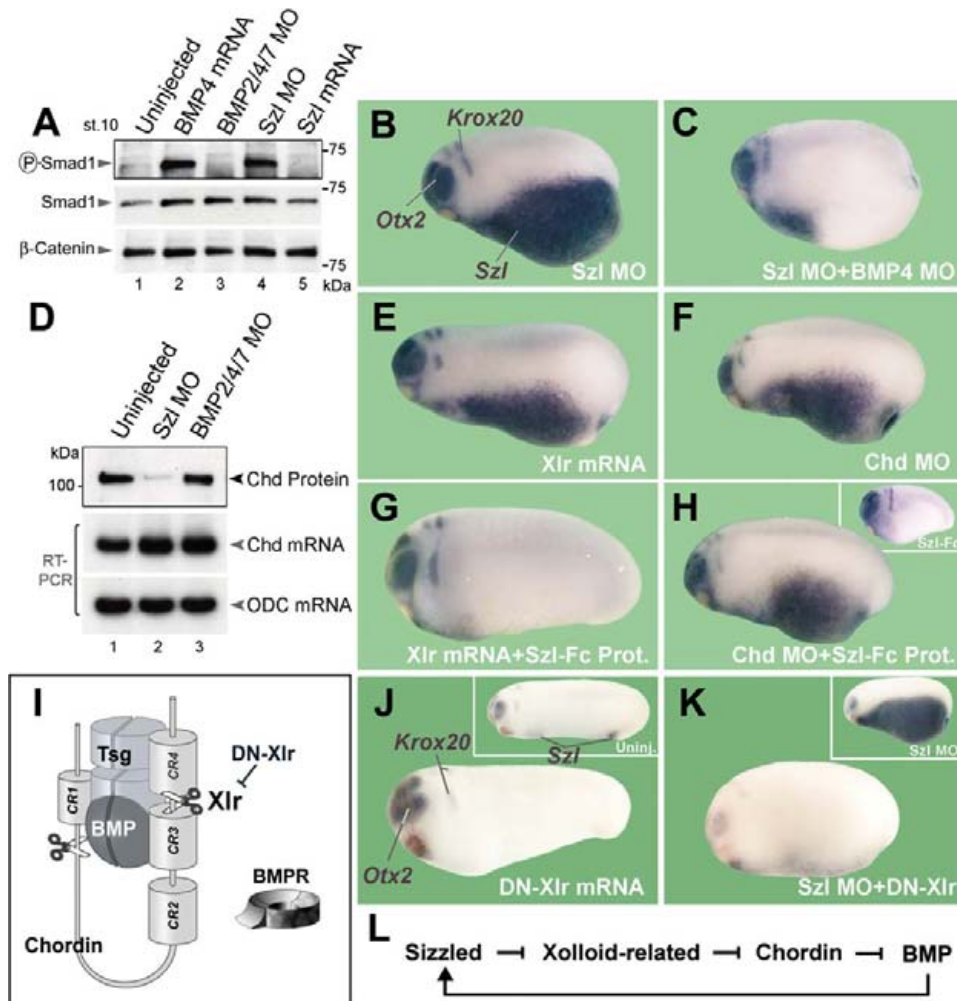


Figure 2. Sizzled Is a Feedback Inhibitor of BMP Signaling that Requires Xlr Activity

(A) Endogenous Smad1 phosphorylation at early gastrula is increased by Szi MO.
 (B) An autoregulatory negative feedback loop is interrupted in Szi MO embryos, resulting in ventro-posterior accumulation of Szi transcripts.
 (C) Szi upregulation is mediated by BMP4 signaling.
 (D) Chd protein, but not *Chd* mRNA levels, are decreased by Szi knockdown (compare lanes 1 and 2). BMP2/4/7 MO injection serves as negative control.
 (E and F) *Xlr* mRNA overexpression or *Chd* knockdown increase ventral *Szi* transcripts, indicating increased BMP signaling.
 (G) Szi-Fc protein injection into the blastula cavity suppresses the pro-BMP effects of *Xlr* mRNA.
 (H) Szi-Fc protein has no effect in *Chd*-depleted embryos. Inset shows phenotype of Szi-Fc injection.
 (I) The role of Xlr in the regulation of Chordin anti-BMP activity. Tsg (Twisted gastrulation) is a cofactor of Chordin.
 (J) Microinjection of DN-Xlr mRNA expands *Otx2* expression, a sign of dorsalization.
 (K) Szi MO feedback loop requires endogenous Xlr function since it is inhibited by DN-Xlr mRNA; compare with inset showing sibling embryo injected with Szi MO alone.
 All microinjection results were performed at least three times and minimum of 15 embryos were analyzed by hybridization in each sample.
 (L) Schematic diagram of the proposed BMP negative feedback loop via Sizzled, in which Szi inhibits Xlr activity.

experiments suggest the molecular pathway for DV patterning depicted in Figure 2L, in which Sizzled works as an inhibitor of Xlr.

Sizzled Binds to Xolloid-Related

We next took a direct biochemical approach to determine whether the Sizzled and Xlr proteins interacted with each other. Szi-Fc protein was prebound to protein A beads, incubated with conditioned medium from transfected 293T cells

containing Flag-tagged Xlr (Dale et al., 2002) and washed. It was found that Xlr bound to Szi-Fc beads but not to control beads containing secreted Fc fragment alone (Figure 3A, lanes 1 and 2). In similar conditions, Szi-Fc was unable to bind Chordin, Xwnt8, or the ternary complex of Chd/Tsg/BMP4 proteins (Figure 3A, lanes 3–6 and data not shown).

The sFRP protein family has a conserved primary structure with an amino-terminal Fz domain and a carboxy-terminal NTR domain related to the axon guidance molecule Netrin

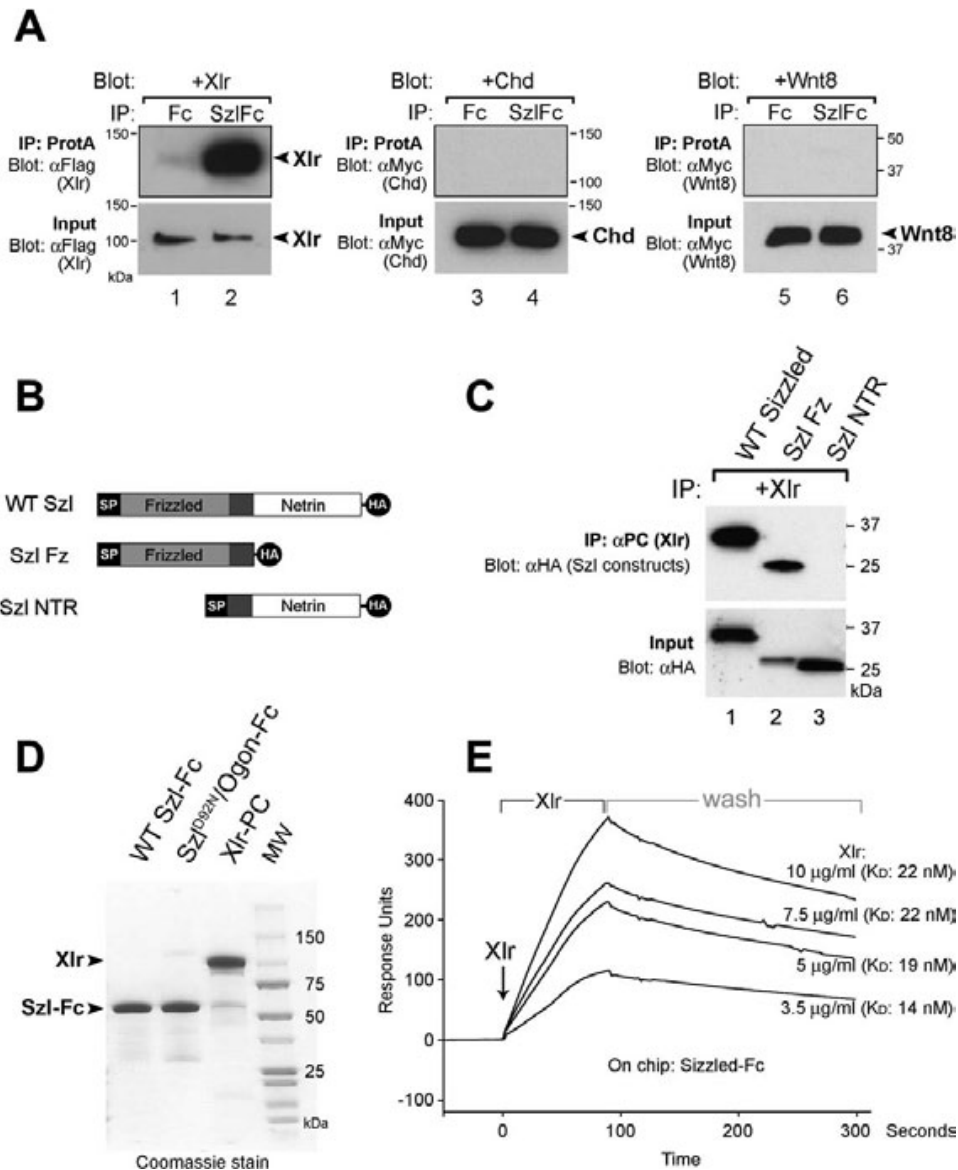


Figure 3. Sizzled Binds to Xolloid-Related

(A) Xlr protein, but not Chd or Xwnt8, binds to Szl-Fc in immunoprecipitation assays. Secreted Fc fragment alone does not bind. (B) Sizzled constructs encoding the frizzled (Szl-Fz) or netrin (Szl-NTR) domains. (C) Szl is pulled down by Xlr specifically via the Fz domain. (D) Coomassie Blue stain of affinity-purified Szl-Fc, Szl^{D92N}/Ogon-Fc, and Xlr-PC reagents. (E) Xlr protein binds to Sizzled-Fc on the BIAcore sensor chip with $K_D = 19 \pm 3.7$ nM.

(Leysn et al., 1997; Banyai and Patthy, 1999). To determine which domain of Sizzled interacted with Xlr, the molecule was HA-tagged and subdivided into its two domains, Szl-Fz and Szl-NTR (Figure 3B). We then used the reciprocal pull-down, in which Xlr tagged with protein C (PC) was bound to Ca^{2+} -dependent anti-PC antibody beads (Roche), incubated with full-length or individual domain Sizzled proteins, washed, and then eluted with EDTA (a procedure that circumvented nonspecific binding of Szl to agarose beads). It was found that the Xlr binding region mapped to the Fz

domain and not to the netrin domain (Figure 3C, lanes 2 and 3).

To determine whether the binding between Sizzled and Xlr was direct and in the physiological range, Szl-Fc and Xlr-PC were affinity-purified (Figure 3D). Binding affinity was determined by surface plasmon resonance (BIAcore) analysis. Szl-Fc was prebound to protein A crosslinked to the surface of a sensor chip, and changes in the refractive index caused by association of Xlr protein at constant flow (and by its dissociation when washing with buffer alone) were recorded at

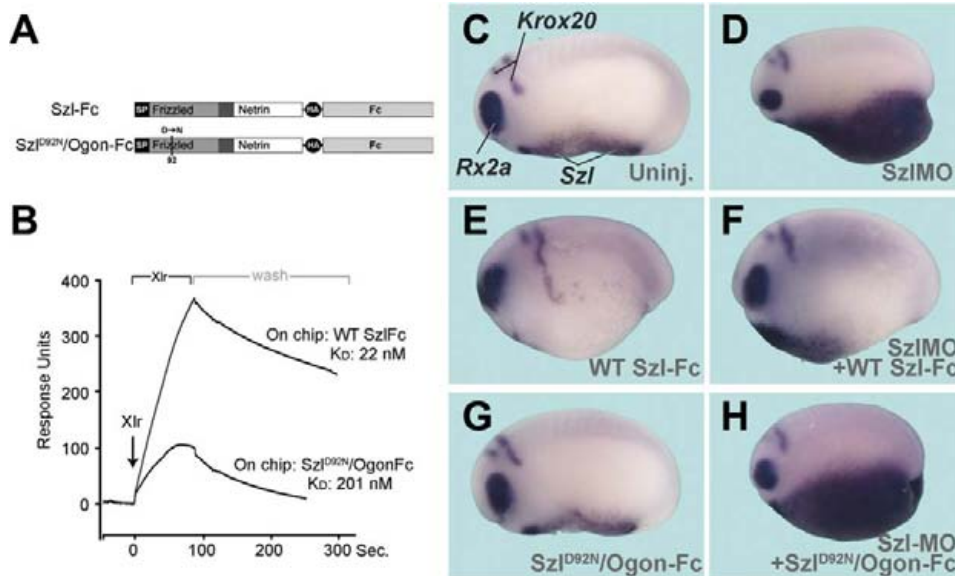


Figure 4. The Szi^{D92N} Point Mutation Mimicking Zebrafish ogon Inhibits Xlr Binding and Biological Activity

(A) Diagram of Szi-Fc and Szi^{D92N}/Ogon-Fc constructs.

(B) BIAcore measurements of binding of 10 µg/ml Xlr in the flow to wild-type Szi-Fc or Szi^{D92N}/Ogon-Fc immobilized on the chip. Note the ten-fold decrease in binding affinity to Xlr.

(C–H) Microinjection of 40 nl of 25 µM wild-type Szi-Fc protein into the blastula cavity dorsalizes the *Xenopus* embryo (E) and rescues the Szi knockdown phenotype (F). Injection of same concentration of Szi^{D92N}/Ogon-Fc protein had no obvious phenotypic effect on wild-type (G) or Szi MO (H) embryos.

different Xlr concentrations (Figure 3E). From the kinetic rates of association and dissociation, the equilibrium dissociation constant (K_D) was calculated and found to be about 20 nM (19 ± 3.7 nM) Xlr. We conclude that Sizzled binds specifically to Xlr, through the frizzled domain, and within physiological range (2×10^{-8} M).

Sizzled Mimicking an ogon Mutation Shows Decreased Binding to Xlr

Zebrafish genetics identified an *ogon* point mutation in the frizzled domain, in which an aspartate changed into asparagine results in a functionally null Szi/ogon protein (Martyn and Schulte-Merker, 2003; Yabe et al., 2003). We mimicked this point mutation in *Xenopus* Sizzled (Figure 4A), designated it Szi^{D92N}, and tested its ability to bind to Xlr. As can be seen in Figure 4B, Szi^{D92N}/Ogon-Fc associated with Xlr at a reduced rate when compared to its wild-type counterpart. The K_D was calculated at 201 nM, about ten times lower than the affinity of the wild-type Szi protein for Xlr. Importantly, the D92N point mutation completely eliminated the dorsalizing activity of Szi-Fc protein microinjected into the blastula cavity of *Xenopus* embryos (Figure 4, compare E to G). In Szi MO embryos, in which the ventral Sizzled autoregulatory loop is blocked, wild-type Szi-Fc was able to rescue the ventral accumulation of Szi transcripts, but microinjection of the same amount of Szi^{D92N}/Ogon-Fc was without any effect (compare Figure 4F to 4H). We conclude from these experiments that a point mutation in Sizzled that severely decreases its

binding affinity for the Xlr metalloproteinase also eliminates its biological activity in embryos.

Sizzled Inhibits Xlr via Its Frizzled Domain

We next investigated whether Sizzled could inhibit the proteolytic activity of Xolloid-related. Proteases of the Tolloid family cleave the Chordin substrate at two conserved sites (Figure 5A) (Piccolo et al., 1997; Dale et al., 2002). Our biochemical reaction used affinity-purified Xlr-Flag as the enzyme, *Xenopus* Chordin produced in baculovirus vector as the substrate, and purified *Xenopus* Szi-Fc as the inhibitor. Proteolytic digestions were carried out at 25°C in the conditions described by Piccolo et al. (1997), and the resulting products analyzed in Western blots using an N-terminal antibody (α -NChd) or a C-terminal Myc tag (Figures 5A and 5B). Xlr efficiently cleaved full-length Chordin (Figure 5B, lanes 1 and 2). Addition of Szi-Fc inhibited proteolytic cleavage in a dose-dependent way, resulting in the stabilization of full-length Chordin (Figure 5B, lanes 3 to 8). Remarkably, all inhibitory activity was lost when the Szi^{D92N} point mutant was used in the same proteolytic reaction (Figure 5C).

We also investigated which domain of Sizzled contained the Xlr inhibitory activity. Microinjection of mRNAs encoding each domain of Szi showed that the dorsalizing (anti-BMP) activity resided in the Fz, and not in the NTR, domain (Figure 5D). In enzyme assays, the NTR domain of Szi did not affect proteolysis of Chordin, while the Szi Fz domain was sufficient to inhibit Xlr activity (Figure 5E, compare lanes

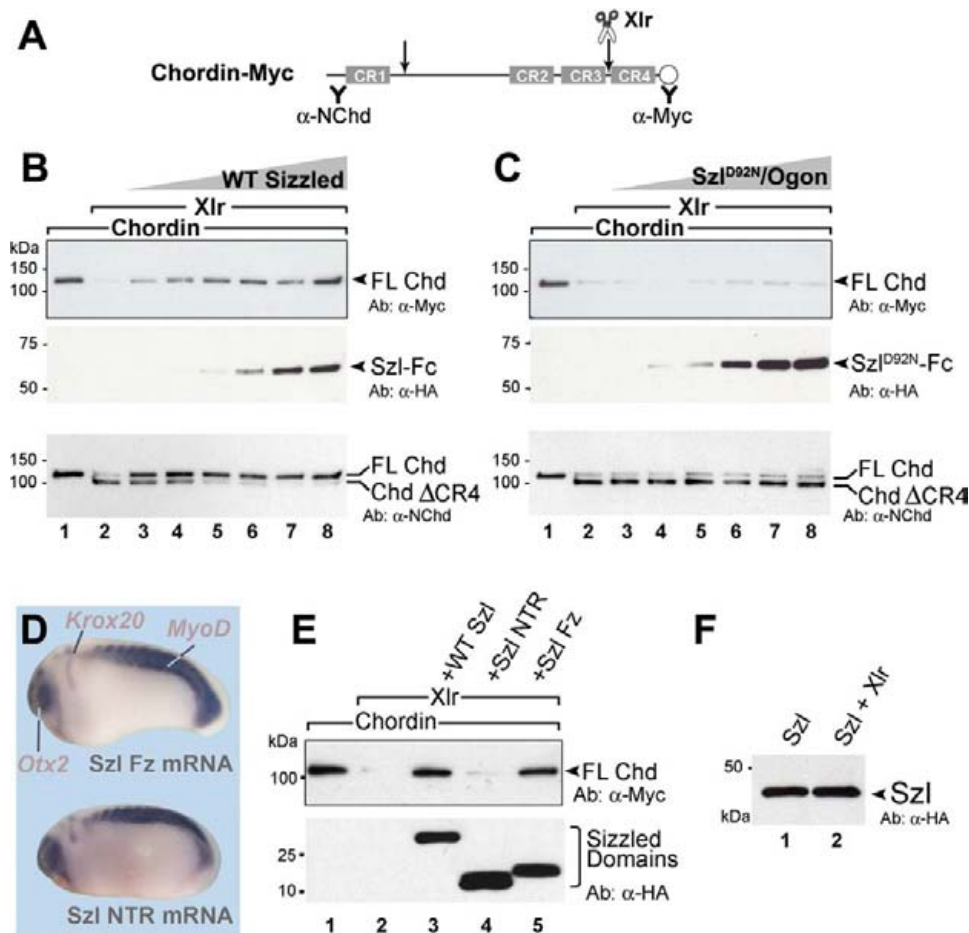


Figure 5. Sizzled, but not Szl^{D92N} Mutant, Inhibits the Proteolytic Activity of Xlr on Its Natural Substrate Chordin

(A) Diagram of Chordin protein structure and antibody recognition sites.

(B) Specific proteolysis of Chd (20 nM) by Xlr enzyme can be inhibited by increasing concentrations of Szl-Fc (lanes 3–8, 4–100 nM).

(C) Increasing concentrations of Szl^{D92N}/Ogon-Fc do not inhibit Xlr activity.

(D) Dorsalizing biological activity of Szl is caused by its frizzled domain, not the netrin domain.

(E) Sizzled inhibits Xlr proteolysis of Chordin via its frizzled domain.

(F) Sizzled is not digested by Xlr after 2 hr digestion with 2 nM Xlr enzyme.

4 and 5). We conclude that the *in vivo* phenotypes of Szl can be entirely explained by the metalloproteinase inhibitory activity of its Fz domain.

Sizzled Is a Competitive Inhibitor of Xlr

We next took a more quantitative approach in which digestion products were measured using a chemifluorescent substrate on a Typhoon blot imager. First, we analyzed the kinetics of the enzyme reaction at increasing substrate (Chd) concentrations (Figure 6A). From double reciprocal Lineweaver-Burk plots, we determined that the K_m (Michaelis constant, the concentration at which 50% of the enzyme is complexed with its substrate) was approximately 25 nM Chd (Figure 6A). This compares well to the K_m of BMP1/Procollagen C-peptidase on its endogenous substrate Procollagen type I (96 nM; Hojima et al., 1985).

Second, we determined that Szl is a competitive inhibitor of the proteolytic reaction. In the presence of a constant concentration of Szl-Fc, the apparent K_m for the substrate changed while the maximal velocity (V_{max}) did not, indicating a competitive inhibitory kinetics (Figure 6A). The K_i (inhibitor constant, the concentration of inhibitor at which half of the enzyme is complexed to the inhibitor) was calculated from the slope in the presence of 10 or 100 nM Szl (Dixon and Webb, 1979) and corresponded to approximately 33 nM Szl. Finally, we quantified the effects of increasing inhibitor concentration at a single concentration of substrate (Figure 6B). Use of the Dixon plot ($1/v$ versus [inhibitor]) allows one to determine the K_i provided the K_m is known (Dixon and Webb, 1979). The K_i calculated in this way was 14 nM. While this value may appear quite different than the K_i of 33 nM calculated from Figure 6A, we note that both measurements are congruent with the 20 nM equilibrium dissociation

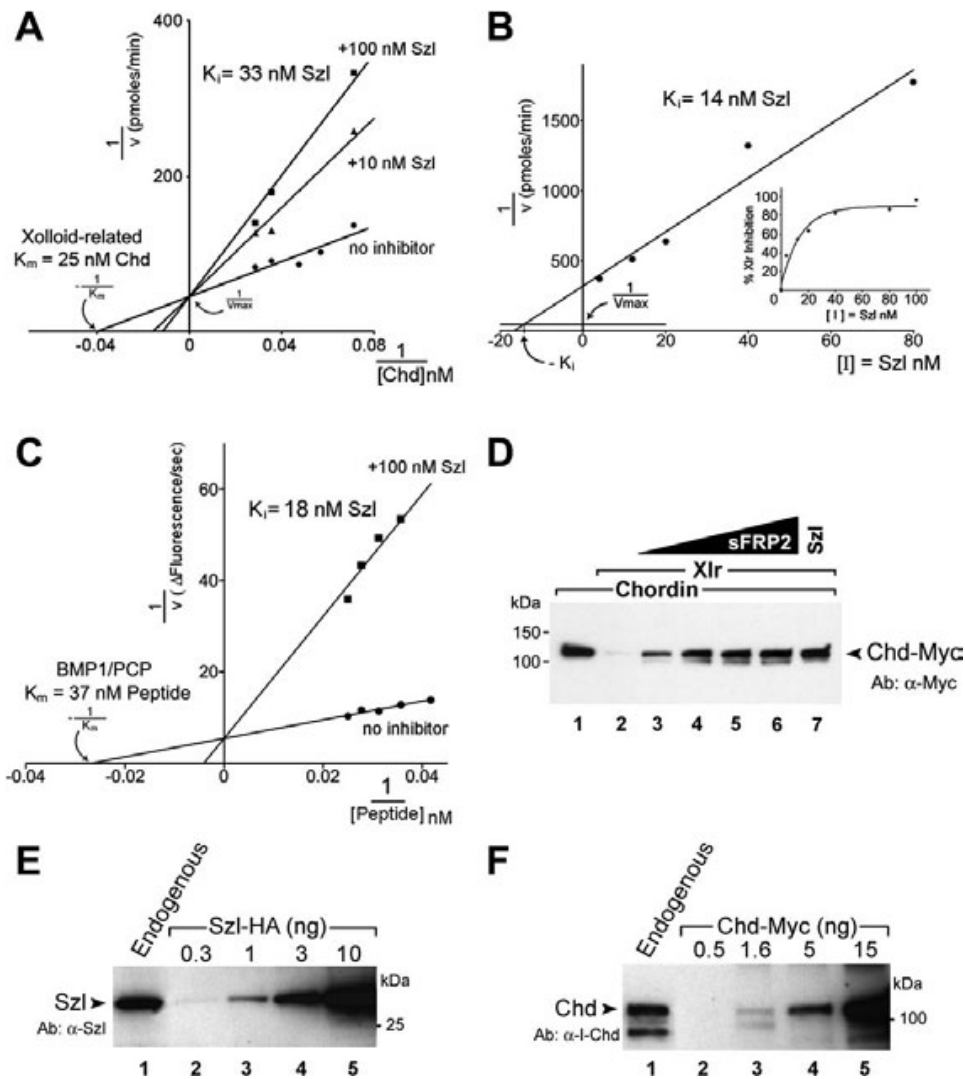


Figure 6. Sizzled, Xlr, and Chordin Interact at the Physiological 10^{-8} M Range

(A) Lineweaver-Burk double reciprocal plot showing chordinase activity of Xlr as a function of [substrate]. Michaelis constant K_m was 25 nM. Szi (10 nM or 100 nM) behaves as a competitive inhibitor of substrate digestion. The inhibition constant K_i was calculated at 33 nM.

(B) Dixon plot of data obtained by varying [inhibitor]. At $K_m=25$ nM, $-K_i$ corresponds to the [Inhibitor] that intersects at a height of $1/V_{max}$. Thus, $K_i = 14$ nM by this method.

(C) Lineweaver-Burk plot showing that Szi-Fc competitively inhibits the cleavage of fluorogenic heptapeptide by BMP1/PCP.

(D) The proteolytic activity of Xlr on Chordin substrate (lanes 1 and 2) can be inhibited by increasing concentrations of pure murine sFRP2 (lanes 3–6). Concentrations used were 3, 10, 25, and 50 nM sFRP2. Note in lane 7 that 40 nM *Xenopus* Szi-Fc had comparable activity.

(E) Endogenous Sizzled proteins secreted by seven dissociated embryos (lane 1) compared to a dilution curve of recombinant Szi-HA stained with affinity-purified *Xenopus* anti-Szi antibody.

(F) Endogenous Chordin protein secreted by seven embryos during gastrulation (lane 1) compared to a Chordin-Myc dilution curve stained with α -l-Chd antibody.

constant (K_D) determined for Xlr binding to Sizzled immobilized to a BIAcore chip. It is remarkable that independent measurements of the affinities of Chordin (K_m), Sizzled (K_i), and Xlr (K_D) in this reaction all were in the low 10^{-8} M range.

Since the inhibition by Sizzled is competitive, i.e., it can be counteracted by increasing substrate concentrations, in formal enzyme kinetic terms this means that the inhibitor binds to the substrate binding site in the enzyme. Sizzled behaves

as a competitive inhibitor of the enzymatic activity of Xolloid-related because it can bind to the enzyme with a similar affinity and to the same site as its physiological substrate Chordin but is not cleaved by the Xlr protease, as shown in Figure 5F.

Sizzled Inhibits BMP1/PCP

Does Sizzled inhibit other Tollid-like metalloproteinases? There are three closely related Tollid genes in *Xenopus*, of

which only Xlr exhibits localized expression during early development (Goodman et al., 1998; Dale et al., 2002). We found that BMP1/PCP (Figure 6C) and Xolloid (data not shown) were also targets of Szi inhibition. A short artificial fluorogenic substrate for BMP1/PCP exists, which greatly simplifies enzyme kinetic measurements. This heptapeptide was originally developed to study caspases (Enari et al., 1996) but fortuitously has similarities to the cleavage recognition sites present in Procollagen-C peptides (Greenspan, 2005). Cleavage of the fluorogenic peptide by BMP1/PCP was efficient, with a K_m of 37 nM, and Szi inhibited competitively this digestion, with a K_i of 18 nM (Figure 6C). Xlr also showed proteolytic activity on the heptapeptide substrate but with lower affinity ($K_m=114$ nM), and Szi was able to competitively inhibit this reaction as well (data not shown). Since an artificial heptapeptide can be competed by Szi, this strongly supports the view that Sizzled acts on the active site of BMP1/PCP and Xlr proteases, as also suggested by the competitive enzyme kinetics. We conclude that Szi is a natural inhibitor of Tolloid-like proteases.

sFRP2 Inhibits Xlr

We next investigated whether other sFRPs had biochemical activity similar to that of Sizzled/Ogon. It was found that mouse sFRP2, a commercially available protein (R&D Systems), caused a dose-dependent inhibition of Chordin cleavage by Xlr proteinase (Figure 6D, lanes 3–6). The inhibitory activity of sFRP2 was comparable to that of Sizzled at similar concentration (Figure 6D, lane 7). The amino acid sequence of mouse sFRP2 is 30% identical and 45% similar to *Xenopus* Sizzled. Most of the similarities are found in the Fz CRD, whereas the netrin domain is not significantly conserved (data not shown). In *Xenopus*, the sFRP2 gene is expressed in the prospective neural plate and the Spemann organizer (Pera and De Robertis, 2000) and shares 33% identity and 48% similarity to *Xenopus* Sizzled. We conclude that another member of the sFRP gene family serves as an inhibitor of zinc metalloproteinases.

Endogenous Sizzled and Chordin Concentrations

Finally, we determined the amounts of Sizzled and Chordin proteins present in the *Xenopus* gastrula (Figures 6E and 6F). Embryos were dissociated and proteins secreted during gastrulation (between stages 10.5 to 12) were collected in 5 μ l/embryo of Ca^{2+} - and Mg^{2+} -free medium. Proteins originating from seven embryos (two independent experiments) were analyzed in Western blots using affinity-purified polyclonal antibodies directed against Szi and Chd (see Experimental Procedures). Dilutions of purified Szi-HA or recombinant Chd-Myc of known concentrations (determined by Coomassie Blue staining) were used as standards (Figures 6E and 6F, lanes 2–5). It was estimated that each embryo secreted 0.45 ng of Szi and 1.5 ng of Chd protein (Figures 6E and 6F, lane 1). Assuming that the gastrula has a total volume of 1.4 μ l (Piccolo et al., 1996) and an extracellular space of about 30%, the concentration of Szi was estimated at 30 nM and that of Chordin at 33 nM, if they were distributed uniformly in the extracellular space. In the ventral and dorsal

extracellular space these concentrations would be expected to be significantly higher as they originate from localized sources. The concentration of Xlr enzyme was not determined but is expected to be much lower. We find it remarkable that the substrate and the inhibitor, for which the active site of the enzyme has similar affinities, are present in vivo at comparable concentrations, which are consistent with their proposed patterning activities.

DISCUSSION

This research was initiated in an attempt to understand why knockdown of Chordin and Sizzled in *Xenopus* embryos produced identical phenotypes, in particular a striking accumulation of Szi transcripts in ventral ectoderm. We discovered that this phenomenon could be explained by a novel molecular mechanism mediating regulation of DV patterning. Sizzled has the sequence of an sFRP yet was found here to inhibit BMP signaling by an indirect mechanism such that:



This finding introduces a new layer of regulation to the Chordin/BMP DV patterning pathway, in which Sizzled acts as a proteolytic inhibitor of Xolloid-related, an enzyme that degrades the BMP inhibitor Chordin, releasing BMPs complexed with it. When Szi translation is blocked by MO (Collavin and Kirschner, 2003), a negative autoregulatory feedback loop is interrupted, such that Szi transcripts accumulate in ventral ectoderm. Several lines of evidence (Figure 2) support the BMP regulatory loop outlined above: First, Szi knockdown causes an increase in phospho-Smad1 without significantly affecting the level of Wnt signaling. Second, Szi knockdown causes a reduction in the stability of Chordin protein secreted at the gastrula stage. Third, the ventralizing effects of Xlr mRNA can be blocked by microinjected Szi protein. Fourth, inhibiting Chordin proteolysis with DN-Xlr interrupts the BMP4 feedback loop. These biological experiments suggest that Sizzled controls DV patterning by regulating the levels of Chordin in the embryo. Supporting this view, Szi/ogon is devoid of anti-BMP effects in ventral half-embryos lacking the Spemann organizer.

Sizzled Is a Competitive Enzyme Inhibitor

To demonstrate that Sizzled is indeed an inhibitor of the Xlr metalloproteinase, we used a direct biochemical approach. Chordin was digested with affinity-purified Xlr enzyme. This could be inhibited by Sizzled in a concentration-dependent manner. A measure of the affinity of Xlr for its substrate Chordin is provided by the Michaelis constant, K_m , which was found to be about 25 nM Chd at 25°C. This value is within physiological range (Hojima et al., 1985; Greenspan, 2005). The inhibition constant, K_i , which represents the concentration of Sizzled at which 50% of the enzyme is bound to the inhibitor, was calculated between 13 and 33 nM. The kinetics of inhibition indicate that Sizzled is a competitive inhibitor, in which Chordin and Sizzled compete with similar affinities for the substrate binding site in the enzyme. Sizzled

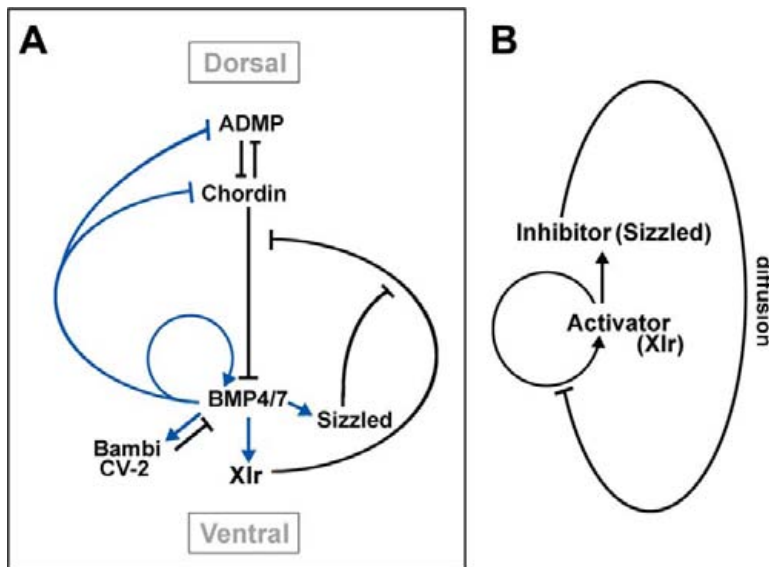


Figure 7. Model of the Regulation of DV Patterning in *Xenopus* Embryos by a Network of Extracellular Proteins

(A) Diagram summarizing the observations reported here and in Reversade and De Robertis (2005). Transcriptional regulation is shown in blue, direct protein-protein interactions in black. The regulatory loops are shown at equilibrium and do not describe how the pattern arises through the activity of maternal signals present in the egg.

(B) Diagram of how an activator (Xlr) and an inhibitor (Sizzled) would generate pattern, according to the model of Meinhardt and Gierer (2000).

functions as an inhibitor, rather than a substrate, because it is not cleaved by Xlr. The affinities determined by enzyme kinetics were in the same range as the equilibrium dissociation constant, K_D , calculated at 20 nM for the direct binding of purified Xolloid-related to Sizzled immobilized on a BIAcore sensor chip. We were able to estimate the endogenous levels of Sizzled and Chordin secreted into the extracellular space during gastrulation: if uniformly distributed, each would correspond to about 30 nM. In the ventral and dorsal centers, their concentrations are expected to be much higher, depending on diffusion rates. These endogenous levels are congruent with the affinity constants available for Szl, Xlr, and Chd. They are all in the low 10^{-8} M range and are consistent with the view that competitive inhibition of protease activity by Sizzled may indeed play a role in the physiological regulation of DV patterning.

There is much genetic evidence from zebrafish supporting the molecular mechanism described here. Extensive screens identified only two ventralizing (high BMP) zygotic loci, which mapped to the *sizzled* and *chordin* genes and had very similar overall mutant phenotypes (Hammerschmidt and Mullins, 2002; Schier and Talbot, 2005). The present work provides an explanation for why these phenotypes are similar: Chordin is the substrate and Sizzled the inhibitor of a Tolloid-like metalloproteinase. Seldom does one have such strong genetic support for the view that a particular protein (Chordin) is the endogenous substrate of a protease/inhibitor (Tolloid/Sizzled) pair.

Zebrafish genetic studies identified a point mutation in the Fz domain that causes a complete loss of function of *szl/ogon* (Yabe et al., 2003; Martyn and Schulte-Merker, 2003). Recreating this mutation in *Xenopus* Sizzled greatly helped our investigations. The binding affinity of Szl^{D92N} to Xlr was ten times lower than that of wild-type Szl in binding assays, and the mutation caused a complete loss of biological activity of the mutant protein microinjected into the blastula embryo (Figure 4). Szl^{D92N} was unable to inhibit cleavage

of Chordin by Xlr, strongly supporting our proposal that Sizzled acts as a metalloproteinase inhibitor. We conclude that the wild-type function of Szl/ogon is to regulate the enzymatic activity of the Xlr metalloproteinase.

An Extracellular Network of DV Patterning Molecules

Figure 7A shows a model of how a network of extracellular proteins may regulate DV patterning. In the ventral center, high levels of BMP4/7 signaling via Smad1 activate the expression of the BMP target genes Bambi, Crossveinless-2, Xlr, and Sizzled. Bambi (BMP and Activin Membrane Bound Inhibitor) encodes a natural dominant-negative BMP receptor lacking serine/threonine kinase activity (Onichtchouk et al., 1999) that strongly synergizes with Szl in knockdown experiments (Reversade and De Robertis, 2005). Crossveinless-2 (CV-2) is a secreted protein containing five BMP binding modules similar to those of Chordin (De Robertis and Kuroda, 2004). Xolloid-related is a ventrally expressed metalloproteinase that appears to play a critical role in DV patterning (Dale et al., 2002). Tolloid proteolysis increases BMP signaling by degrading the BMP antagonist Chordin and releasing BMPs bound to Chordin (Piccolo et al., 1997; Goodman et al., 1998; Reversade and De Robertis, 2005). High BMP signals inhibit the expression of dorsal center genes such as Chordin and ADMP (Anti-Dorsalizing Morphogenetic Protein). ADMP is a BMP expressed dorsally that signals only at a distance from the dorsal organizer because it is inhibited locally by Chordin and released ventrally by Xlr (Reversade and De Robertis, 2005). Sizzled is a key regulator of Xlr activity and, interestingly, both proteins are secreted by ventral center cells.

Turing (1952) proposed that an activator and an inhibitor diffusing from a single source can generate a stable pattern provided that they diffuse at different rates. Our understanding of pattern-generating systems has been further enriched by the realization that an activator that induces its own expression and that of a more diffusible inhibitor will produce

stable morphogen patterns at equilibrium (Meinhardt and Gierer, 2000); a diagram of how this would be achieved in the case of Xolloid-related (an activator of BMP signaling) and its inhibitor Sizzled is shown in Figure 7B. On the dorsal side, a similar function has been proposed recently for the ADMP-Chordin pair (Reversade and De Robertis, 2005). Double diffusion-reaction systems emanating from both the dorsal and ventral sides may play an important role in assuring the robustness of DV patterning by BMP signals. A critical link in this self-regulating communication between the dorsal and ventral sides of the embryo appears to be provided by the activity of the Xolloid-related chordinase (Figure 7A).

In the present study, we have made efforts to quantify the enzyme kinetic and binding constants of the reactions between Xlr, Sizzled, and Chordin. We think that determining the affinities of all the interactions shown in Figure 7A will be an important undertaking that will allow one to model how a network of extracellular proteins works. We find it remarkable that many of these interactions are mediated by direct protein-protein interactions in the extracellular space. The affinities of these bindings can be quantified, and for each component, gain- and loss-of-function reagents are available in the *Xenopus* system. This offers an excellent opportunity for investigating how protein networks regulate intercellular signaling in the extracellular space.

A Natural Inhibitor of BMP1 and Xlr

The novel protease inhibitory activity of Sizzled described here mapped to the Frizzled domain. Many proteins contain Fz domains, such as Frizzled Wnt receptors, sFRP Wnt antagonists, Collagen XVIII (a basement membrane component), Smoothened (Hedgehog co-receptor), MuSK (muscle-specific tyrosine kinase receptor), Ror (orphan RTK-like neurotrophic receptors), and zinc Carboxypeptidase Z (Xu and Nusse, 1998; Rehn et al., 1998). The sole activity previously demonstrated for Fz domains was to bind Wnts (Bhanot et al., 1996; Leyns et al., 1997; Hsieh et al., 1999; Povelones and Nusse, 2005), but it is possible that this module might have additional functions. Here we have provided evidence that in addition to Sizzled/Ogon, sFRP2 is an inhibitor of Xolloid-related. Other experiments indicate that mammalian sFRP3, known by the name Frzb-1 in *Xenopus*, and Crescent may also be enzyme inhibitors of Tolloids (A.L.A., H.X.L., and E.M.D.R, unpublished data). With at least seven sFRPs in vertebrates (sFRPs 1 to 5, Crescent, and Sizzled; Rattner et al., 1997; Pera and De Robertis, 2000), three Toll-like genes (Dale et al., 2002), and many more extracellular members of the zinc metalloprotease superfamily (Stöcker et al., 1995), a great potential for additional signaling regulation exists. A question for the future is whether other Fz domain proteins, such as Frizzled receptors, regulate extracellular metalloproteinases as well.

Sizzled inhibited both the cleavage of Chordin and of an artificial heptapeptide substrate by Xlr and by BMP1/PCP. The observation that Sizzled is a competitive inhibitor of the digestion of a short peptide substrate indicates that Szl inhibits binding of substrate to the active site of Tolloid-like

enzymes. BMP1/PCP is an enzyme of considerable interest since it is required for the carboxy-propeptide cleavage of fibrillar procollagens. Procollagens are major constituents of the extracellular matrix, with Procollagen I being the most abundant protein in the human body (Byers, 2001). Because the Procollagen-C peptide must be removed before collagen triple helical fibers can be formed, it has been proposed that inhibitors of BMP1/PCP might serve to prevent fibrosis or excessive scar tissue formation after surgery (Greenspan, 2005). Tolloid-related enzymes are part of the astacin family of proteases, for which no known endogenous inhibitors exist so far (Bond and Beynon, 1995; Baker et al., 2002). Astacins are part of a much larger superfamily of zinc metalloproteinases, the Metzincins, that degrade the extracellular matrix (Stöcker et al., 1995; Baker et al., 2002). Identifying the peptide sequences in Sizzled that block the BMP1/PCP active site could help in the rational design of specific inhibitors of extracellular metalloproteinases with potential therapeutic value.

EXPERIMENTAL PROCEDURES

Morpholino Oligos and Embryonic Manipulations

Antisense MOs (Gene Tools LLC) were as described: Chd MO (Oelgeschläger et al., 2003), Szl MO (Collavin and Kirschner, 2003), and BMP2, BMP4, BMP7 MOs (Reversade et al., 2005). Each MO was microinjected four times radially into 2- or 4-cell embryos (34 ng total). Bisection experiments were performed at stage 9 in 0.3 × Barth solution (Reversade and De Robertis, 2005). Spemann organizer transplantations were as described (Oelgeschläger et al., 2003). For mRNA microinjection, 200 pg of *Xenopus* Sizzled (Pera and De Robertis, 2000), 400 pg Szl-Fz, 400 pg Szl-NTR, 400 pg BMP4, and 1 ng of Xlr or of its dominant-negative Y286N missense mutant (DN-Xlr) form (Dale et al., 2002) were used. Affinity-purified Szl-Fc or Szl^{D92N}-Fc proteins were microinjected (25 μM, 40 nl) into the blastocoel at mid-blastula (stage 8). Procedures for mRNA synthesis, whole-mount in situ hybridization and RT-PCR are available at <http://www.hhmi.ucla.edu/derobertis/index.html>.

Biochemical Methods

Xenopus Sizzled-HA, Xlr-PC, and Xlr-Flag were tagged at the C termini by PCR. For purification at high concentration, Szl-Fc was generated by fusion of a PCR fragment containing the heavy chain constant domain of human immunoglobulin (from EST gi: 61216116) to the C terminus of Sizzled. Szl-Fz encompassed the first 155 residues up to Ser155. Szl-NTR was generated by internal deletion of the frizzled module from Cys27 to Cys136 with a Glu and a Leu insertion resulting from the restriction enzyme linker. For Szl^{D92N}-Fc, site-directed mutagenesis Quik-change kit (Stratagene) was used. Proteins were produced by transient transfection (Fugene, Roche) of HEK 293T cells. Secreted proteins in conditioned media were then affinity-purified using PC (Roche), Protein A (Sigma), or HA beads (Covance) according to manufacturer's instructions. Endogenous Chordin was detected with blot-purified α-l-Chd antibody as described in Oelgeschläger et al. (2003) and endogenous Szl was detected using 1:5000 dilution of anti-Szl antibody. A synthetic peptide encompassing the final 50 residues of *Xenopus* Sizzled was used to immunize rabbits (Covance) and affinity-purified using the same antigen. Phospho-Smad1 was detected in stage 10.5 whole embryos using α-phospho-hSmad1 antibody (Persson et al., 1998). Immunoprecipitation of Szl-interacting proteins was performed with conditioned media containing Xlr-Flag, S2-produced Xwnt8-Myc (Hsieh et al., 1999), or baculovirus Chd-Myc (Piccolo et al., 1996) and pulled down with Szl-Fc or Fc alone following methods described in Reversade and De Robertis (2005). The reciprocal pulldown was performed with Xlr-PC on anti-PC

agarose beads followed by Szi binding and elution with EDTA as described by the manufacturer (Roche).

Surface Plasmon Resonance Analysis

Surface plasmon resonance (SPR) measurements were performed in a BIAcore 3000 system. Protein A (Sigma) was dissolved at 10 µg/ml in 10 mM sodium acetate (pH 5.0) and immobilized on a CM5 sensor chip using the amine coupling method to a level of about 2500 response units. Binding and washes were performed in Xld Buffer (Piccolo et al., 1997) using affinity-purified proteins dialyzed in the same buffer. Each experimental cycle consisted of an initial flow of 300 µg/ml Szi-Fc or Szi^{D92N}-Fc into the respective flow cells to pre-bind Sizzled prior to the flow of Xlr-PC at various concentrations. After each cycle, chip surfaces were regenerated by removing noncrosslinked proteins with 10 mM HCl. Data were analyzed with BIAevaluation 4.1 software and curve-fitting was done with the assumption of one-to-one binding (Wang et al., 2003).

Xlr and BMP1 Enzymatic Digestion Assays

For in vitro digestion, 30 nM Chd-Myc produced in baculovirus (Piccolo et al., 1996) was incubated in Xld Buffer with affinity-purified Xlr-Flag containing the indicated concentrations of Szi-Fc, Szi^{D92N}-Fc, or sFRP2 (R&D Systems, carrier-free) at 25°C for 2 hr. Western blots were visualized with Pico chemiluminescent substrate (Pierce). For kinetic studies, the chemi-fluorescent ECL-plus substrate (Amersham Biosciences) was used and quantified on a Typhoon 9410 blot imager (GE Healthscience). Synthetic peptide digestions with Xlr-Flag or BMP1 conditioned media were performed in microtiter plates with increasing concentrations of the fluorogenic peptide, Mca-Y-V-A-D-A-P-K(Dnp)-OH (R&D Systems), in the presence or absence of Szi and monitored on a fluorescent plate reader (excitation = 320 nm, emission = 405 nm). Initial velocities were determined from the rate of fluorescence increase over the first 15–60 min time course.

Supplemental Data

Supplemental data include four figures and can be found with this article online at <http://www.cell.com/cgi/content/full/124/1/147/DC1/>.

ACKNOWLEDGMENTS

We thank Drs. W. Wang and R. Lehrer for generous assistance with BIAcore analysis, Drs. L. Dale, C. Heldin, J.C. Hsieh, J. Nathans, and J. Larrain for reagents, and members of our laboratory for comments on the manuscript. This work was supported by the NIH (R37 HD21502-19). A.L.A. was supported by a postdoctoral fellowship of the Jonsson Cancer Center Foundation/UCLA. E.M.D.R. is an Investigator of the Howard Hughes Medical Institute.

Received: October 13, 2005

Revised: November 23, 2005

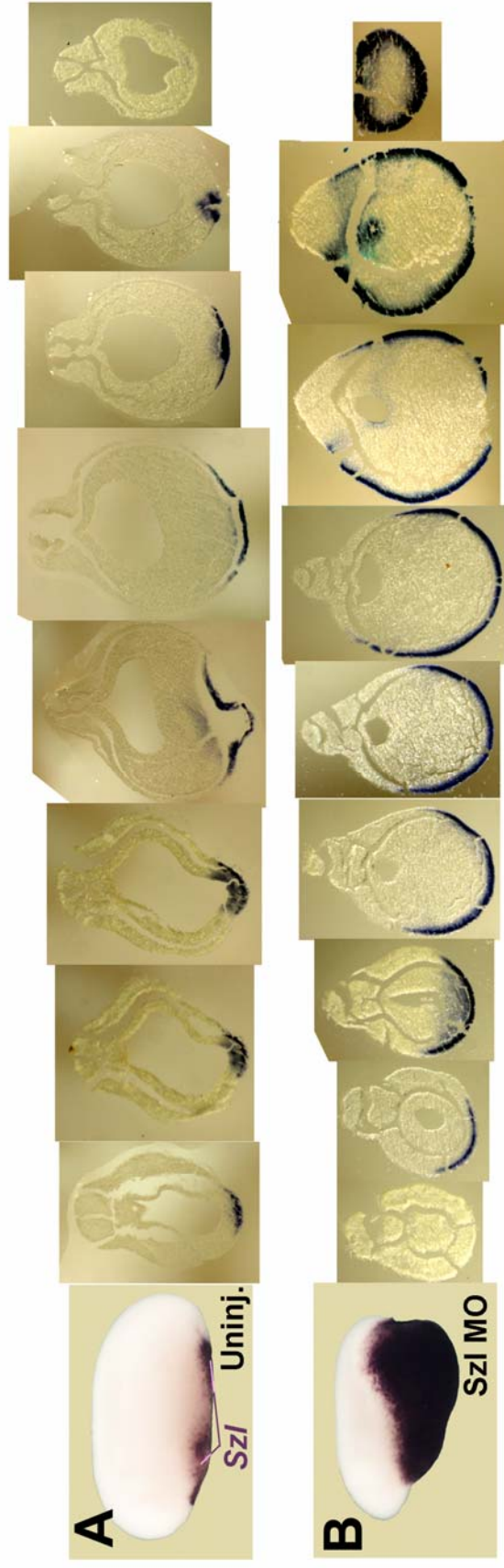
Accepted: December 13, 2005

Published: January 12, 2006

REFERENCES

- Baker, A.H., Edwards, D.R., and Murphy, G. (2002). Metalloproteinase inhibitors: biological actions and therapeutic opportunities. *J. Cell Sci.* **115**, 3719–3727.
- Banyai, L., and Patthy, L. (1999). The NTR module: domains of netrins, secreted frizzled related proteins, and type I procollagen C-proteinase enhancer protein are homologous with tissue inhibitors of metalloproteases. *Protein Sci.* **8**, 1636–1642.
- Bhanot, P., Brink, M., Samos, C.H., Hsieh, J.C., Wang, Y., Macke, J.P., Andrew, D., Nathans, J., and Nusse, R. (1996). A new member of the *frizzled* family from *Drosophila* functions as a Wingless receptor. *Nature* **382**, 225–230.
- Bond, J.S., and Beynon, R.J. (1995). The astacin family of metalloproteinases. *Protein Sci.* **4**, 1247–1261.
- Bradley, L., Sun, B., Collins-Racie, L., LaVallie, E., McCoy, J., and Sive, H. (2000). Different activities of the frizzled-related proteins *frzb2* and *sizzled2* during *Xenopus* anteroposterior patterning. *Dev. Biol.* **227**, 118–132.
- Byers, P.H. (2001). Disorders of collagen biosynthesis and structure. In *The Metabolic and Molecular Bases of Inherited Diseases*, C. Scriver, A. Beaudet, W. Sly, and D. Valle, eds. (New York: McGraw-Hill), pp. 5241–5285.
- Collavin, L., and Kirschner, M.W. (2003). The secreted Frizzled-related protein Sizzled functions as a negative feedback regulator of extreme ventral mesoderm. *Development* **130**, 805–816.
- Dale, L., Evans, W., and Goodman, S.A. (2002). Xolloid-related: a novel BMP1/Tolloid-related metalloprotease is expressed during early *Xenopus* development. *Mech. Dev.* **119**, 177–190.
- De Robertis, E., and Kuroda, H. (2004). Dorsal-ventral patterning and neural induction in *xenopus* embryos. *Annu. Rev. Cell Dev. Biol.* **20**, 285–308.
- Dixon, M., and Webb, E.C. (1979). *Enzymes* (New York: Academic Press).
- Enari, M., Talanian, R.V., Wong, W.W., and Nagata, S. (1996). Sequential activation of ICE-like and CPP32-like proteases during Fas-mediated apoptosis. *Nature* **380**, 723–726.
- Goodman, S.A., Albano, R., Wardle, F.C., Matthews, G., Tannahill, D., and Dale, L. (1998). BMP1-related metalloproteinases promote the development of ventral mesoderm in early *Xenopus* embryos. *Dev. Biol.* **195**, 144–157.
- Greenspan, D.S. (2005). Biosynthetic processing of collagen molecules. *Top. Curr. Chem.* **247**, 149–183.
- Hammerschmidt, M., and Mullins, M.C. (2002). Dorsal-ventral patterning in the zebrafish: bone morphogenetic proteins and beyond. *Results Probl. Cell Diff.* **40**, 72–95.
- Hammerschmidt, M., Serbedzija, G.N., and McMahon, A.P. (1996). Genetic analysis of dorsoventral pattern formation in the zebrafish: requirement of a BMP-like ventralizing activity and its dorsal repressor. *Genes Dev.* **10**, 2452–2461.
- Hojima, Y., van der Rest, M., and Prockop, D.J. (1985). Type I procollagen carboxyl-terminal proteinase from chick embryo tendons. *J. Biol. Chem.* **260**, 15996–16003.
- Hsieh, J.C., Rattner, A., Smallwood, P.M., and Nathans, J. (1999). Biochemical characterization of Wnt-frizzled interactions using a soluble, biologically active vertebrate Wnt protein. *Proc. Natl. Acad. Sci. USA* **96**, 3546–3551.
- Kessler, E., Takahara, K., Biniaminov, L., Brusel, M., and Greenspan, D.S. (1996). Bone morphogenetic protein-1: the type I procollagen C-proteinase. *Science* **271**, 360–362.
- Leyns, L., Bouwmeester, T., Kim, S.-H., Piccolo, S., and De Robertis, E.M. (1997). *Frzb-1* is a secreted antagonist of Wnt signaling expressed in the Spemann Organizer. *Cell* **88**, 747–756.
- Martyn, U., and Schulte-Merker, S. (2003). The ventralized *ogon* mutant phenotype is caused by a mutation in the Zebrafish homologue of Sizzled, a secreted Frizzled-related protein. *Dev. Biol.* **260**, 58–67.
- Meinhardt, H., and Gierer, A. (2000). Pattern formation by local self-activation and lateral inhibition. *Bioessays* **22**, 753–760.
- Miller-Bertoglio, V., Carmany-Rampey, A., Furthauer, M., Gonzalez, E.M., Thisse, C., Thisse, B., Halpern, M.E., and Solnica-Krezel, L. (1999). Maternal and zygotic activity of the zebrafish *ogon* locus antagonizes BMP signaling. *Dev. Biol.* **214**, 72–86.
- Oelgeschläger, M., Kuroda, H., Reversade, B., and De Robertis, E.M. (2003). Chordin is required for the Spemann organizer transplantation phenomenon in *Xenopus* embryos. *Dev. Cell* **4**, 219–230.

- Onichtchouk, D., Chen, Y.G., Dosch, R., Gawantka, V., Delius, H., Masague, J., and Niehrs, C. (1999). Silencing of TGF-beta signaling by the pseudoreceptor BAMBI. *Nature* *401*, 480–485.
- Pera, E., and De Robertis, E.M. (2000). A direct screen for secreted proteins in *Xenopus* embryos identifies distinct activities for the Wnt antagonists Crescent and Frzb-1. *Mech. Dev.* *96*, 183–195.
- Persson, U., Izumi, H., Souchelnytskyi, S., Itoh, S., Grimsby, S., Engstrom, U., Heldin, C.H., Funahashi, K., and ten Dijke, P. (1998). The L45 loop in type I receptors for TGF-beta family members is a critical determinant in specifying Smad isoform activation. *FEBS Lett.* *434*, 83–87.
- Piccolo, S., Sasai, Y., Lu, B., and De Robertis, E.M. (1996). Dorsoventral patterning in *Xenopus*: Inhibition of ventral signals by direct binding of Chordin to BMP-4. *Cell* *86*, 589–598.
- Piccolo, S., Agius, E., Lu, B., Goodman, S., Dale, L., and De Robertis, E.M. (1997). Cleavage of Chordin by the Xolloid metalloprotease suggests a role for proteolytic processing in the regulation of Spemann organizer activity. *Cell* *91*, 407–416.
- Povelones, M., and Nusse, R. (2005). The role of the cysteine-rich domain of Frizzled in Wingless-Armadillo signaling. *EMBO J.* *24*, 3493–3503.
- Rattner, A., Hsieh, J.C., Smallwood, P.M., Gilbert, D.J., Copeland, N.G., Jenkins, N.A., and Nathans, J. (1997). A family of secreted proteins contains homology to the cysteine-rich ligand-binding domain of frizzled receptors. *Proc. Natl. Acad. Sci. USA* *94*, 2859–2863.
- Rehn, M., Pihlajaniemi, T., Hofmann, K., and Bucher, P. (1998). The frizzled motif: in how many different protein families does it occur? *Trends Biochem. Sci.* *23*, 415–417.
- Reversade, B., and De Robertis, E.M. (2005). Reciprocal regulation of Admp and Bmp2/4/7 at opposite embryonic poles generates a self-regulating morphogenetic field. *Cell* *123*, 1147–1160.
- Reversade, B., Kuroda, H., Lee, H., Mays, A., and De Robertis, E.M. (2005). Depletion of Bmp2, Bmp4, Bmp7 and Spemann organizer signals induces massive brain formation in *Xenopus* embryos. *Development* *132*, 3381–3392.
- Salic, A.N., Kroll, K.L., Evans, L.M., and Kirschner, M.W. (1997). Sizzled: a secreted Xwnt8 antagonist expressed in the ventral marginal zone of *Xenopus* embryos. *Development* *124*, 4739–4748.
- Schier, A.F., and Talbot, W.S. (2005). Molecular genetics of axis formation in zebrafish. *Annu. Rev. Genet.* *39*, 561–613.
- Schulte-Merker, S., Lee, K.J., McMahon, A.P., and Hammerschmidt, M. (1997). The zebrafish organizer requires chordin. *Nature* *387*, 862–863.
- Stöcker, W., Grams, F., Baumann, U., Reinemer, P., Gomis-Ruth, F.X., McKay, D.B., and Bode, W. (1995). The metzincins-topological and sequential relations between the astacins, adamalysins, serralytins, and matrixins (collagenases) define a superfamily of zinc-peptidases. *Protein Sci.* *4*, 823–840.
- Turing, A.M. (1952). The chemical basis of morphogenesis. *Philos. Trans. R. Soc. Lond. A* *237*, 37–72.
- Wagner, D.S., and Mullins, M.C. (2002). Modulation of BMP activity in dorsal-ventral pattern formation by the chordin and ogon antagonists. *Dev. Biol.* *245*, 109–123.
- Wang, W., Cole, A.M., Hong, T., Waring, A.J., and Lehrer, R.I. (2003). Retrocyclin, an antiretroviral theta-defensin, is a lectin. *J. Immunol.* *170*, 4708–4716.
- Xu, Y.K., and Nusse, R. (1998). The Frizzled CRD domain is conserved in diverse proteins including several receptor tyrosine kinases. *Curr. Biol.* *8*, 405–406.
- Yabe, T., Shimizu, T., Muraoka, O., Bae, Y.K., Hirata, T., Nojima, H., Kawakami, A., Hirano, T., and Hibi, M. (2003). Ogon/Secreted Frizzled functions as a negative feedback regulator of Bmp signaling. *Development* *130*, 2705–2716.



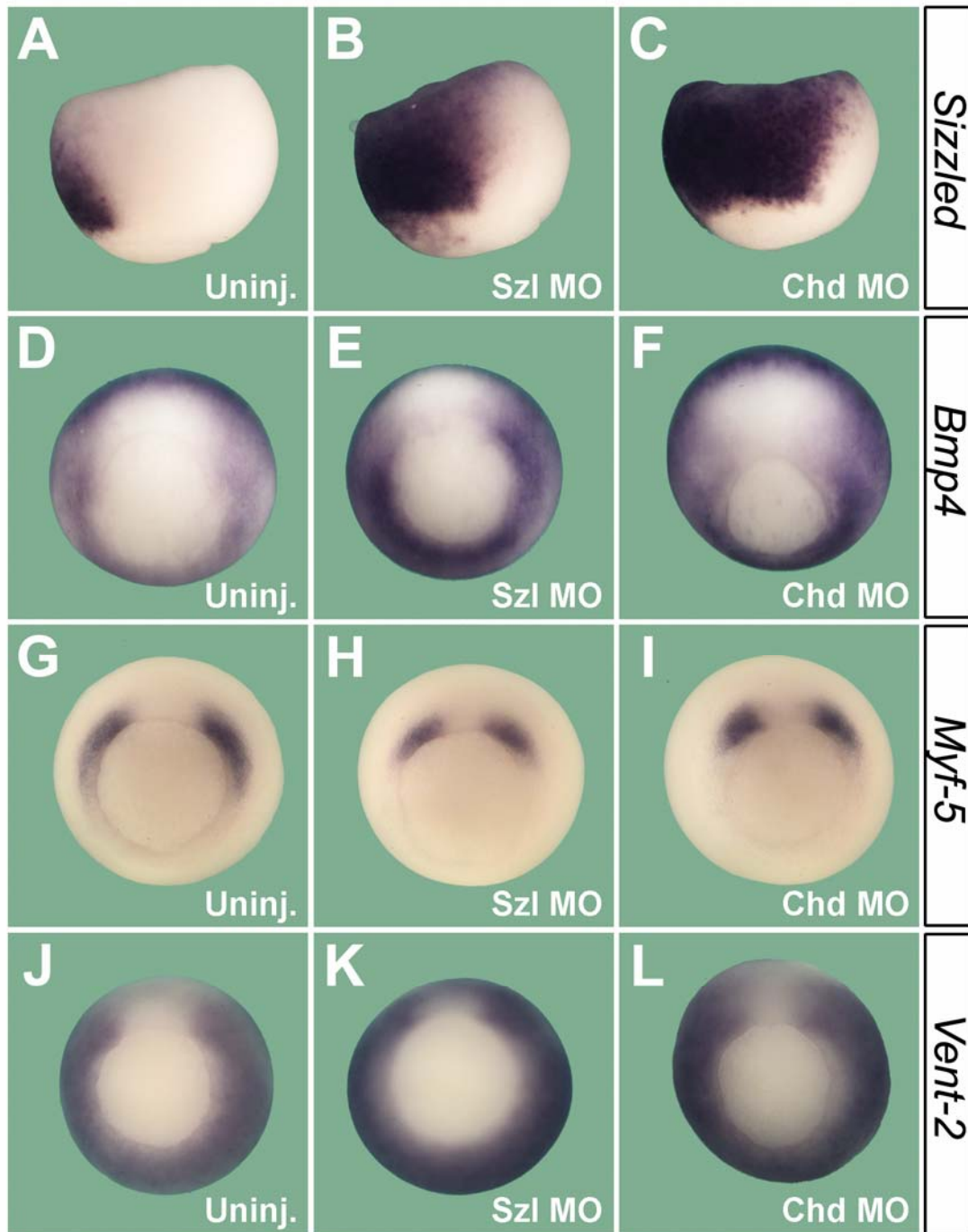
Suppl. Figure1

Figure S1. Depletion of Sizzled Expands *Szl* Transcripts in Ventral Ectoderm

(A) *Sizzled* transcripts mark ventral tissues in uninjected stage 20 embryos.

(B) In *Szl* MO embryos, *Szl* transcripts accumulate in the ventral-posterior region.

Transverse histological sections (20 μm) show that this accumulation occurs mainly in the ectoderm.



Suppl. Figure 2

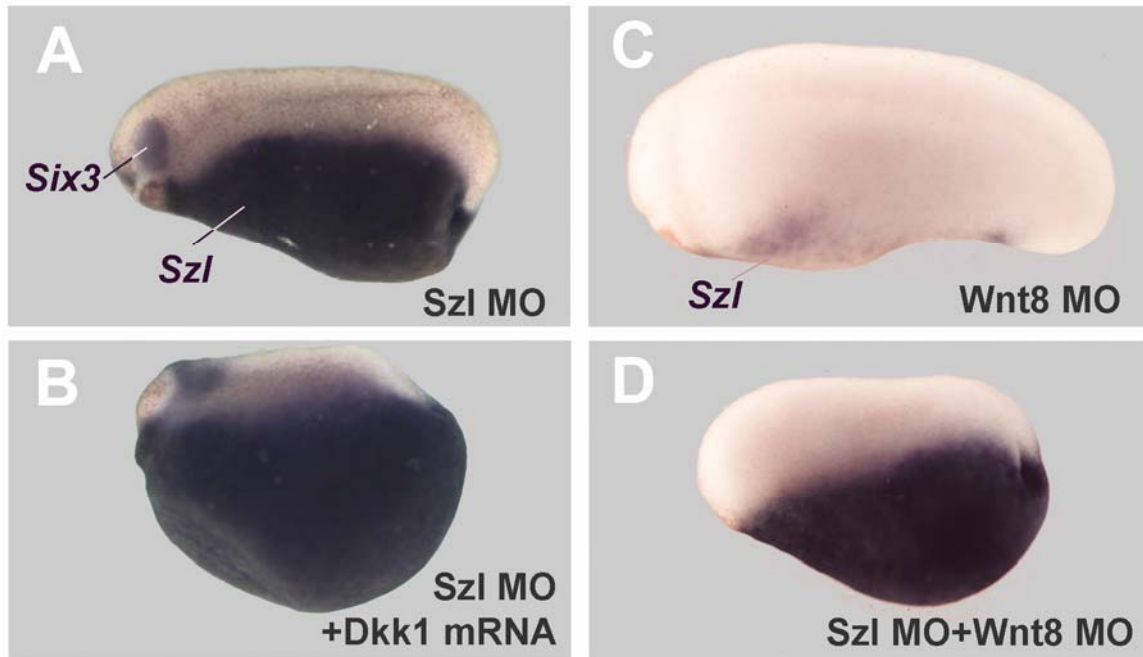
Figure S2. Knockdown of Szl or Chd Expands Region of Ventral BMP Signaling

(A-C) Ventral center, marked by *Szl*, is expanded by *Szl* MO or *Chd* MO. Lateral view, ventral to the left.

(D-F) *BMP4* transcription is increased by *Szl* or *Chd* knockdown. Blastopore view.

(G-I) The marker of intermediate BMP levels, *Myf-5* [Hopwood, N.D., Pluck, A., and Gurdon, J.B. (1991). *Development* 111, 551-560] shows increase of the ventral *Myf-5*-negative region and narrowing of the dorsal gap, indicating a general intensification of BMP signaling.

(J-L) The BMP marker *Vent-2* [Onichtchouk, D., Glinka, A., and Niehrs, C. (1998). *Development* 125,1447-1456] shows a narrowing of the dorsal gap when *Szl* or *Chd* are depleted.



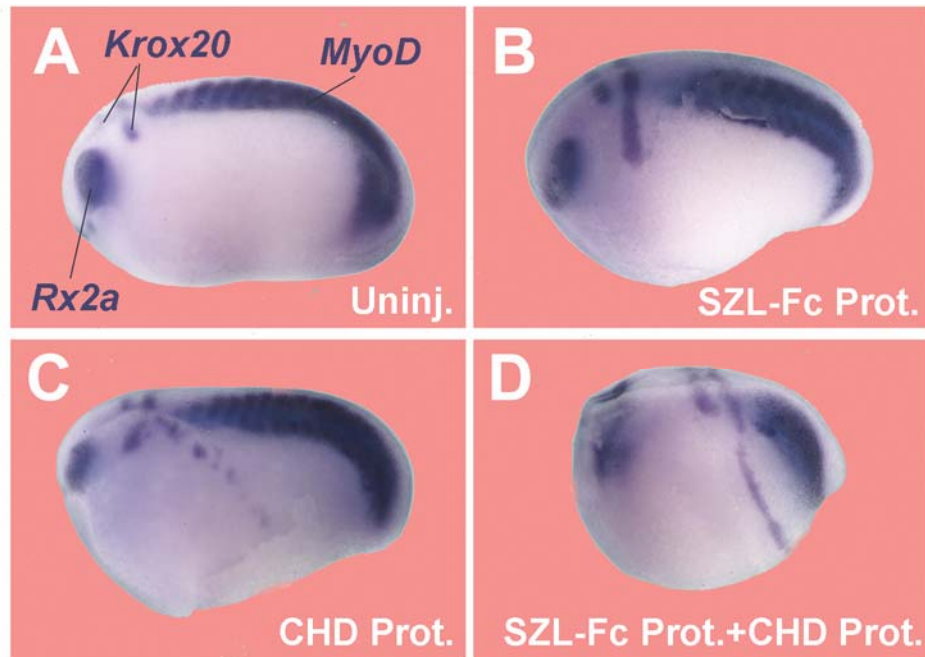
Suppl. Figure 3

Figure S3. *Szl* Ventral Transcript Accumulation by Depletion of the sFRP Sizzled is Unaffected by Inhibition of Wnt Signaling

(A) A BMP negative feedback loop is activated in Szl MO embryos.

(B) Microinjection of canonical Wnt antagonist Dickkopf-1 [Glinka, A., Wu, W., Delius, H., Monaghan, A.P., Blumenstock, C., and Niehrs, C. (1998). *Nature* 391, 357-3620] does not inhibit the accumulation of ventro-posterior *Szl* transcripts, as would be expected if Szl were a Wnt inhibitor.

(C-D) Decreasing Wnt signaling by knockdown of Xwnt-8, the most abundant Wnt in *Xenopus* gastrula, by a MO (5'-GAACAAAGTGGTGT TTTTGCATGATG-3') does not inhibit the *Szl* feedback loop.



Suppl. Figure 4

Figure S4. Microinjected Sizzled and Chordin Proteins Cooperate in Embryonic DV Patterning

(A-B) Szl-Fc protein injection (40 nl 25 μ M) into the blastula cavity causes dorsalization, increasing the head region, as indicated by the eye marker *Rx2a* and hindbrain marker *Krox20*. *MyoD* marks developing muscle.

(C) Microinjection of recombinant Chd protein (40 nl 2.5 μ M; R&D Systems) also causes dorsalization.

(D) Co-injection of Sizzled and Chordin proteins synergize, causing a circumferential expression of *Krox20* and a vast increase in head tissues anterior to *Krox20* with respect to the overall body proportion.